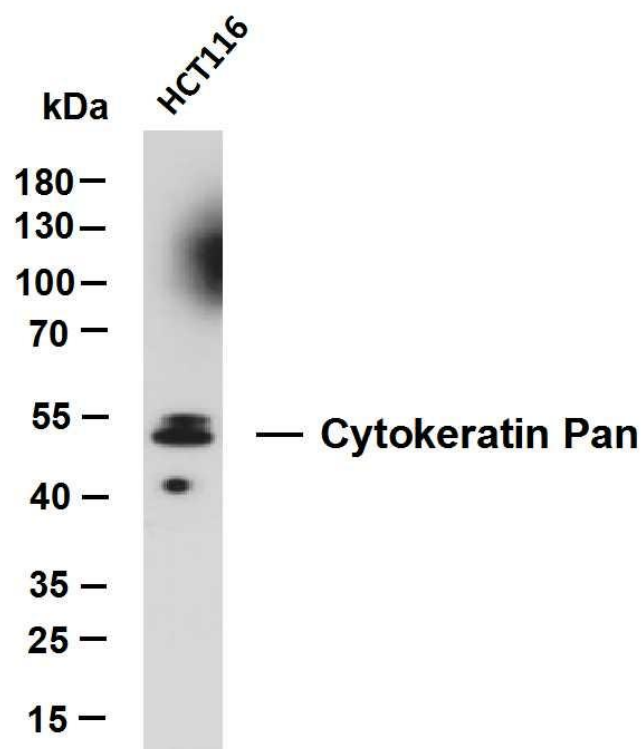




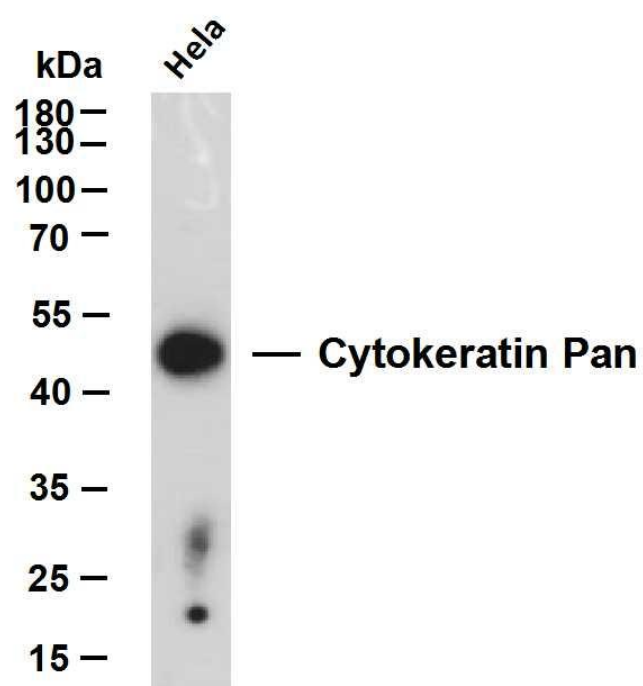
# Cytokeratin (ABT154) Mouse mAb

货号	YP-Ab-17985
同位型	IgG
应用	IHC;WB;ELISA
种属	Human; Mouse (predicted: Rat)
靶点	Cytokeratin Pan
基因名称	CK pan; CK-pan
蛋白名称	Cytokeratin Pan Human Swiss Prot No: P12830/P19022/P22223/P55283/O75309
免疫原	Synthesized peptide derived from human Cytokeratin Pan AA range: 100-200
特异性	The antibody can recognize multiple human Cytokeratins, including CK10, 13, 14, 15, 16, 18, 19, and it can be used for immunohistochemical detection of tumors from monolayer and multilayered epithel
组成	Liquid in PBS containing 50% glycerol, 0.5% BSA and 0.02% sodium azide.
来源	Mouse, Monoclonal/IgG1, Kappa
稀释	IHC-p 1:200-400, WB 1:200-1000, ELISA 1:5000-20000
纯化工艺	The antibody was affinity-purified from mouse ascites by affinity-chromatography using specific immunogen.
细胞定位	Cytoplasmic, Membranous
组织表达	Non-neural epithelial tissues.
浓度	1 mg/ml
储存	-15°C to -25°C/1 year(Do not lower than -25°C)
有关注意事项	Avoid repeated freezing and thawing!
使用建议	This product can be used in immunological reaction related experiments. For more information, please consult technical personnel.

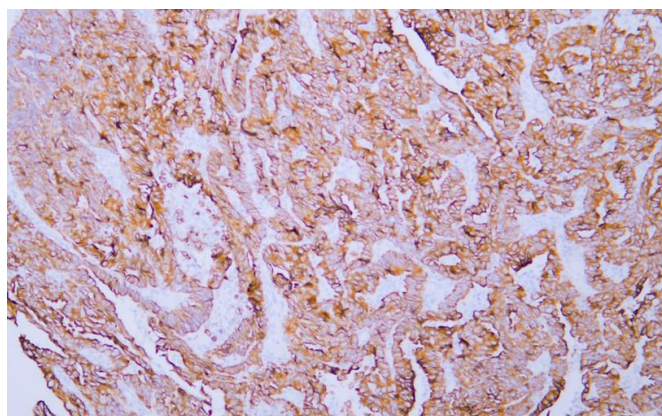
## Products Images



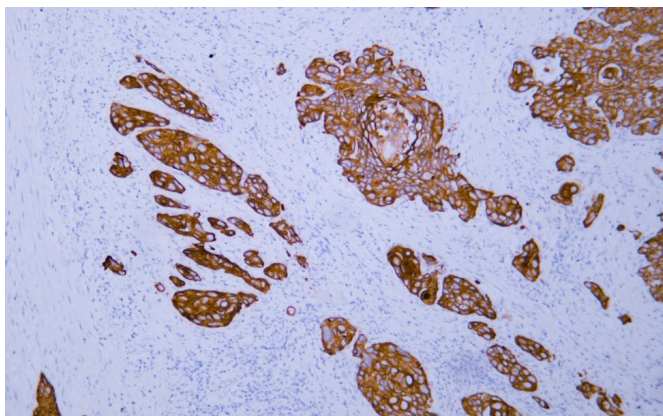
HCT116 whole cell lysates were separated by 10% SDS-PAGE and the membrane was blotted with anti-CK20 (ABT006) antibody. The HRP-conjugated Goat anti-Mouse IgG (H + L) antibody was used to detect the antibody. Lane 1: HCT116 Predicted band size: 50-60 kDa Observed band size: 52, 55 kDa



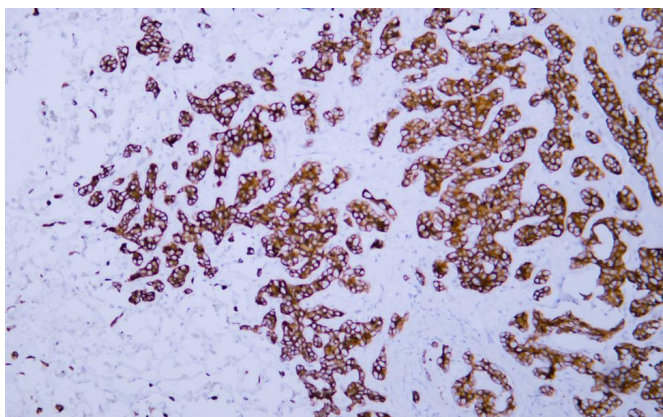
HeLa whole cell lysates were separated by 10% SDS-PAGE, and the membrane was blotted with anti-Cytokeratin Pan (ABT154) antibody. The HRP-conjugated Goat anti-Mouse IgG (H + L) antibody was used to detect the antibody. Lane 1: HeLa Predicted band size: 50-60 kDa Observed band size: 52 kDa



Human endometrial adenocarcinoma tissue was stained with Anti-Cytokeratin (ABT154) Antibody



Human esophageal squamous cell carcinoma tissue was stained with Anti-Cytokeratin (ABT154) Antibody



Human hepatocellular carcinoma tissue was stained with Anti-Cytokeratin (ABT154) Antibody